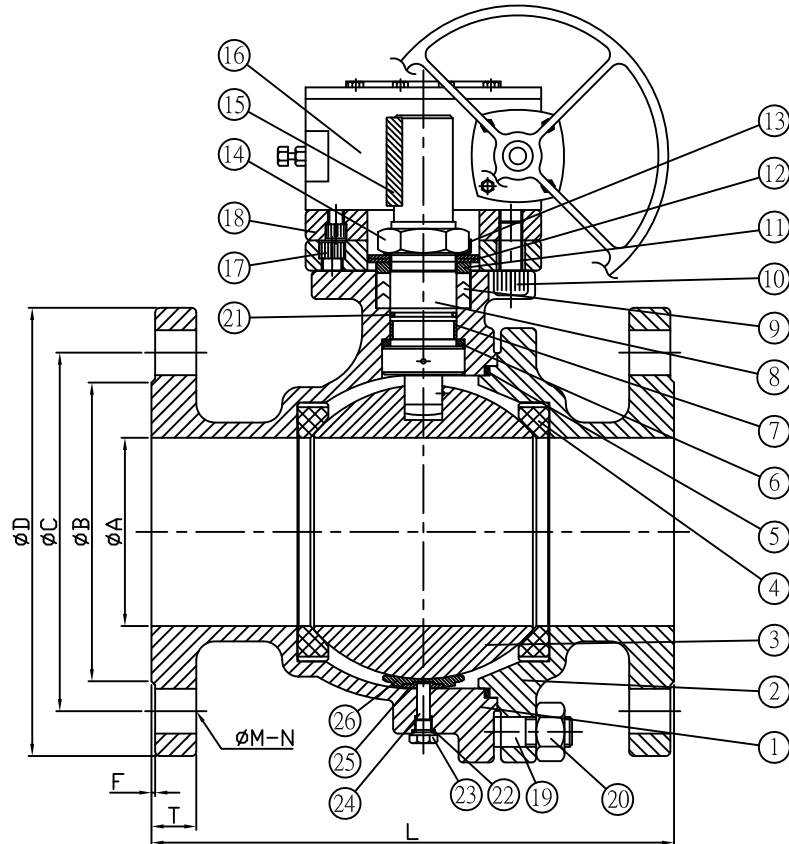


MODEL YK32

FULL PORT
#150
12"



MATERIALS

NO.	PART NAME	MATERIAL
1	BODY	A351 CF8M/A216 WCB
2	CAP	A351 CF8M/A216 WCB
3	BALL	ASTM A351 CF8M
4	SEAT	PTFE+15%G.F
5	BODY SEAL	PTFE.
6	GASKET	PTFE.
7	STEM BUSHING	PTFE.
8	STEM	S.S.316
9	STEM PACKING	PTFE
10	BRACKET BOLT	S.S.304
11	GLAND	S.S.304
12	BELLEVILLE WASHER	S.S.304
13	LOCK WASHER	S.S.304
14	STEM NUT	S.S.304
15	STEM KEY	S.S.304
16	GEAR BOX	CAST IRON
17	GEAR BRACKET BOLT	S.S.304
18	GEAR BRACKET	S.S.304
19	BOLT	S.S.304
20	NUT	S.S.304
21	O-RING	VITON
22	GASKET	PTFE
23	BOTTOM NUT	S.S.304
24	BOTTOM STEM	S.S.304
25	SUPPORT RING	S.S.304
26	SUPPORT PLATED	PTFE+50%CARBON

DIMENSIONS

Unit : Inch

SIZE	A	B	C	D	F	L	T	øM-N
12"	11.81	15.00	17.00	19.00	0.06	24.02	1.25	ø1.00-12

2PC FLANGE BALL VALVE ANSI #150LB 12"										DATE	2015/08/31	
4											DRAWN	
3											CHECK	
2											APPROVED	
1												
NO	DATE	DESCRIPTION	CONFIRM	CLASS 3	0.15	0.2	0.5	0.8	1.2	2	DRAWING NO.	YK32-300A-150LB

J & M INTERNATIONAL LTD.