

SERIES YK5313

ISO 5211 DIRECT MOUNT PAD

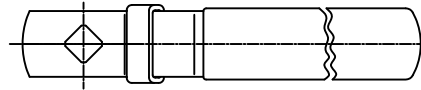
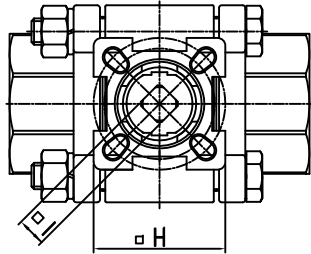
(FULL/REDUCED)

1/4"-2" 2000WOG

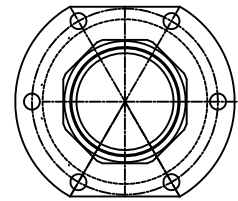
2 1/2"-4" 1500WOG

DIMENSIONS(INCH)

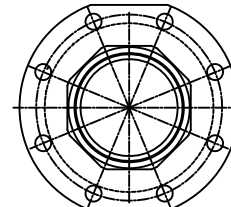
SIZE	B1		B2		∅ D		∅ d1		□ H		□ I		L		L1		O		∅P		RT		S		ISO5211	
	F	R	F	R	F	R	F	R	F	R	F	R	F	R	F	R	F	R	F	R	F	R	F	R	F	R
1/4"	1.59		0.35		0.46				1.65		0.35		2.55		2.95						0.56		0.43		F03/F04	
3/8"	1.59		0.35		0.49				1.65		0.35		2.55		2.95						0.69		0.43		F03/F04	
1/2"	1.59	1.59	0.35	0.35	0.59	0.49	0.63	0.63	1.65	1.65	0.35	0.35	2.85	2.55	2.95	2.95	0.06	0.06	0.85	0.85	0.86	0.86	0.47	0.47	F03/F04	F03/F04
3/4"	1.72	1.59	0.35	0.35	0.79	0.59	0.84	0.84	1.65	1.65	0.35	0.35	3.36	2.85	3.36	2.95	0.06	0.06	1.07	1.07	1.07	1.07	0.55	0.55	F03/F04	F03/F04
1"	2.05	1.72	0.55	0.35	0.98	0.79	1.07	1.07	1.97	1.65	0.43	0.35	4.15	3.36	4.15	3.36	0.06	0.06	1.34	1.34	1.34	1.34	0.55	0.55	F04/F05	F03/F04
1 1/4"	2.24	2.05	0.55	0.55	1.26	0.98	1.4	1.4	1.97	1.97	0.43	0.43	4.37	4.15	4.37	4.15	0.06	0.06	1.68	1.68	1.69	1.69	0.59	0.59	F04/F05	F04/F05
1 1/2"	3.03	2.24	0.61	0.55	1.5	1.26	1.62	1.62	2.76	1.97	0.55	0.43	5.01	4.37	5.01	4.37	0.06	0.06	1.91	1.91	1.92	1.92	0.67	0.67	F05/F07	F04/F05
2"	3.35	3.03	0.61	0.61	1.97	1.5	2.07	2.07	2.76	2.76	0.55	0.55	5.62	5.01	5.62	5.01	0.06	0.06	2.38	2.38	2.41	2.41	0.75	0.75	F05/F07	F05/F07
2 1/2"	4.39	3.35	0.65	0.61	2.56	1.97	2.59	2.59	3.94	2.76	0.67	0.55	7.28	5.62	7.28	5.62	0.06	0.06	3.0	3.0	2.91	2.91	0.83	0.83	F07/F10	F05/F07
3"	4.74	4.39	0.65	0.65	3.15	2.56	3.07	3.07	3.94	3.94	0.67	0.67	8.07	7.28	8.07	7.28	0.06	0.06	3.51	3.51	3.54	3.54	0.98	0.98	F07/F10	F07/F10
4"	5.18	4.74	0.85	0.65	3.94	3.15	4.03	4.03	3.94	3.94	0.87	0.67	9.45	8.07	9.45	8.07	0.06	0.06	4.5	4.5	4.55	4.55	1.18	1.18	F10	F07/F10



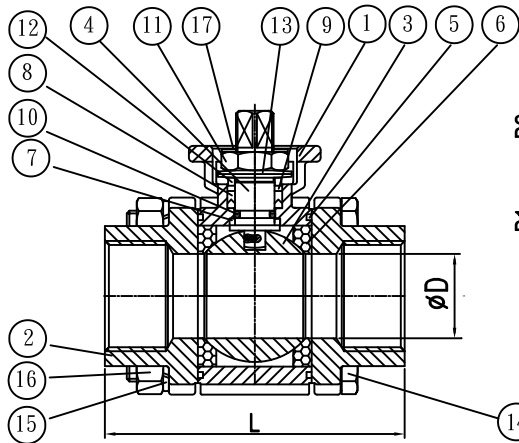
HANDLE



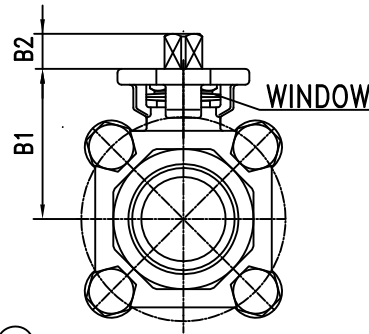
* 2"



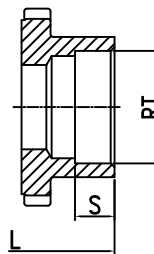
* 2 1/2"-4"



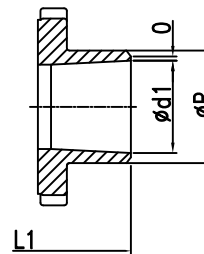
MODEL YK5313
Threaded End



* 1/4"-1 1/2"



MODEL YK5313S
Socket Weld End



MODEL YK5313B
Butt Weld End

MATERIALS LIST

NO.	PART NAME	Q'TY	MATERIAL
1	BODY	1	ASTM-CF8M-A351
2	END CAP	2	ASTM-CF8M-A351
3	BALL	1	ASTM-CF8M-A351
4	STEM	1	SS316
5	JOINT GASKET	2	PTFE
6	SEAT	2	TFM1600
7	STEM SEAL	1	R.PTFE
8	V-RING PACKING	1SET	PTFE
9	BUSHING	1	50% S.S. Powder filled PTFE
10	O-RING	1	VITON
11	STEM NUT	1	SS304
12	GLAND	1	SS304
13	BELLEVILLE WASHER	2	SS301
14	BOLT	*	SS304
15	WASHER	*	SS304
16	BOLT NUT	*	SS304
17	LOCK SADDLE	1	SS304

REVISION	DATE	DESCRIPTION	DRAWN BY	DESIGNED BY	SCALE
△	98-02-11	1/4"-3/8" 長度修改	PETER	PETER	
△	99-09-28	1"-11/4" 螺紋修改	CHECKED BY	APPROVAL BY	DATE
					93-11-15

J&M INTERNATIONAL LTD

SERIES YK5313

DRAWING NO.

9515