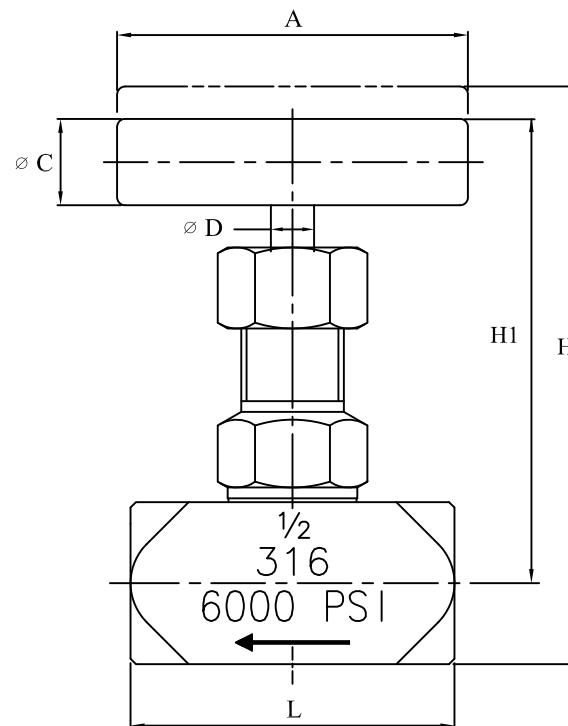
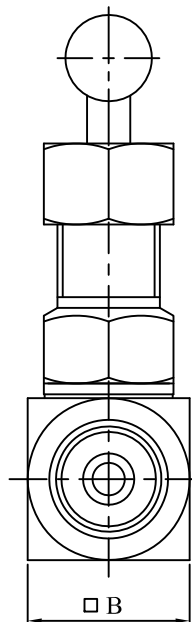
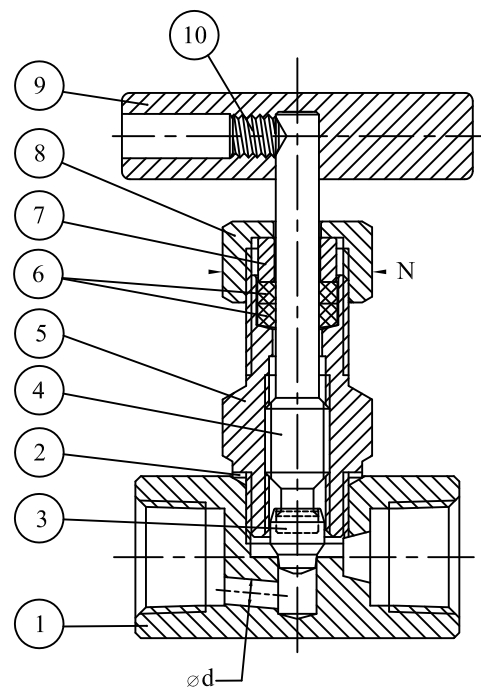


MODEL #501
6000 PSI HIGH PRESSURE NEEDLE VALVE
1/8"~1"



* DIMENSION LIST *

UNIT: INCH

SIZE	A	$\square B$	$\varnothing C$	$\varnothing d$	$\varnothing D$	H	H1	L	N	CV
1/8"	2.36	0.87	0.51	0.12	0.28	3.23	2.56	1.77	0.83	0.40
1/4"	2.36	0.87	0.51	0.12	0.28	3.23	2.56	1.77	0.83	0.40
3/8"	2.36	0.98	0.51	0.12	0.28	3.39	2.64	1.97	0.83	0.40
1/2"	2.56	1.18	0.63	0.16	0.31	4.21	3.39	2.36	0.94	0.75
3/4"	2.56	1.38	0.63	0.20	0.31	4.37	3.46	2.56	0.94	0.90
1"	3.15	1.81	0.75	0.28	0.39	5.24	3.94	3.27	1.18	1.80

* MATERIAL LIST *

NO	DESCRIPTION	
1	BODY	SS 316
2	BODY SEAL	PTFE
3	DISC	SS 316
4	STEM	SS 316
5	BONNET	SS 316
6	PACKING	PTFE
7	GLAND	SS 316
8	PACKING NUT	SS 316
9	HANDLE	SS 410
10	FIXING SCREW	ALLOY STEEL

製圖 DRAWN BY. 審査 CHECKED BY. 比例 SCALE:

設計 DESIGNER BY. 核准 APPROVE 日期 DATE:

J&M INTERNATIONAL LTD

MODEL #501

2015.08.14