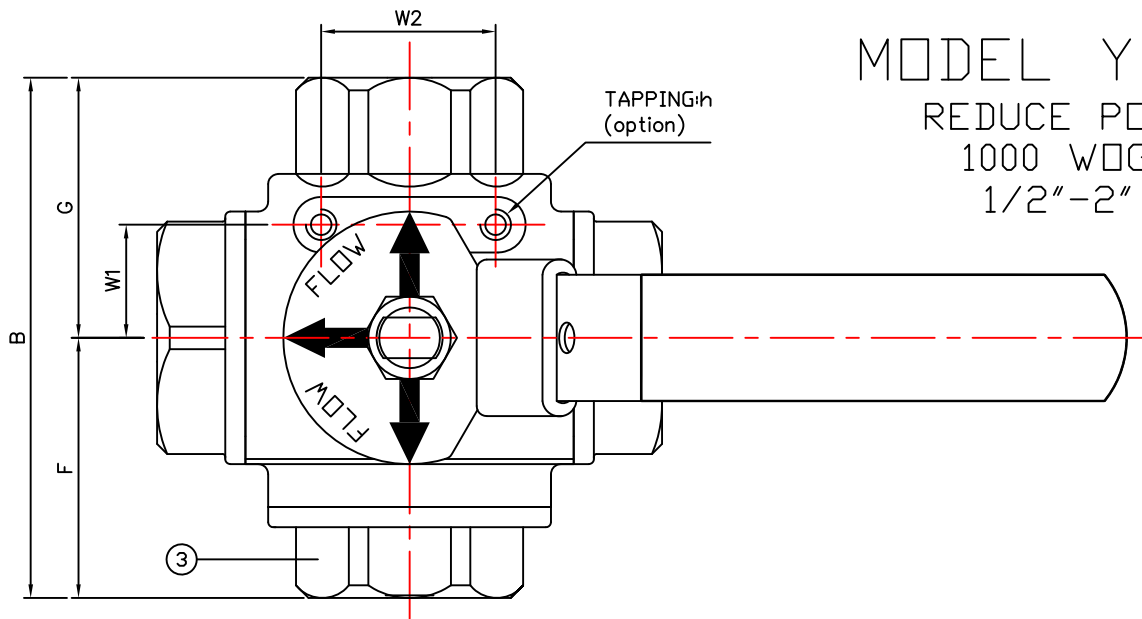


MODEL YK13

REDUCE PORT

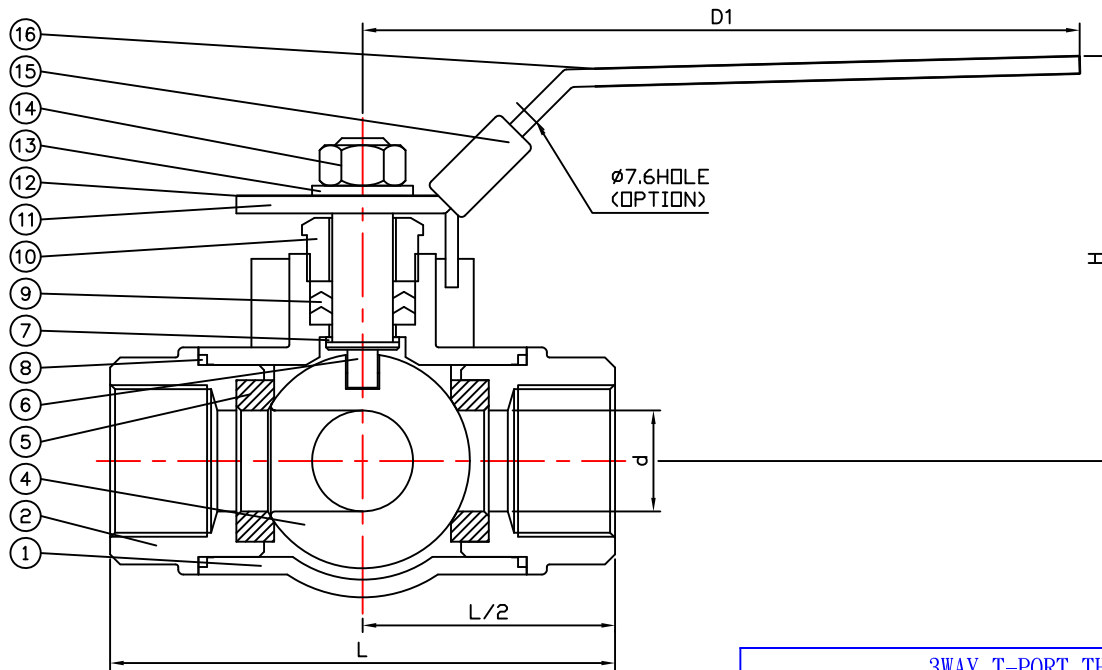
1000 WOG

1/2"-2"



MATERIALS

NO.	PART NAME	SPECIFICATION
1	BODY	ASTM A351 CF8M
2	END CAPS	ASTM A351 CF8M
3	BLIND CAP	ASTM A351 CF8M
4	BALL	ASTM A351 CF8M
5	BALL SEATS	REINFORCED PTFE
6	STEM	S.S.316
7	THRUST WASHER	PTFE
8	END SEALS	PTFE
9	STEM PACKING	PTFE
10	GLAND	S.S.304
11	HANDLE	S.S.304
12	FLOW INDICATOR PLATE	ALUMINUM
13	HANDLE WASHER	S.S.304
14	HANDLE NUT	S.S.304
15	LOCKING PLATE	S.S.304
16	HANDLE SLEEVE	VINYL GRIP



DIMENSIONS

UNITS: Inch

NO.	d	L	H	D1	B	F	G	W1	W2	h
1/2"	0.50	2.95	2.32	4.96	2.80	1.32	1.48	0.88	1.38	10-24UNC
3/4"	0.63	3.35	2.52	4.96	3.21	1.54	1.67	0.88	1.38	10-24UNC
1"	0.79	3.94	3.15	5.71	4.02	1.99	2.03	0.88	1.38	10-24UNC
1-1/4"	0.98	4.53	3.54	5.71	4.27	2.01	2.26	1.00	1.50	10-24UNC
1-1/2"	1.26	4.92	3.78	8.03	4.76	2.28	2.48	1.00	1.50	1/4-20UNC
2"	1.50	5.83	4.17	8.03	5.45	2.58	2.87	1.00	1.50	1/4-20UNC

3WAY T-PORT THREADED END 1000WOG BALL VALVE

DATE 2015/8/11

NO	DATE	DESCRIPTION	CONFIRM	DIM.	0.5	3	6	30	120	315	MATERIAL	CF8M	DRAWN	
4				CLASS	3	6	30	120	315	1000	TREATMENT		CHECK	
3				CLASS 1	0.05	0.05	0.1	0.15	0.2	0.3	WEIGHT(Kg)		APPROVED	
2				CLASS 2	0.1	0.1	0.2	0.3	0.5	0.8	SCALE			
1				CLASS 3	0.15	0.2	0.5	0.8	1.2	2	DRAWING NO.	YK13		J & M INTERNATIONAL LTD.