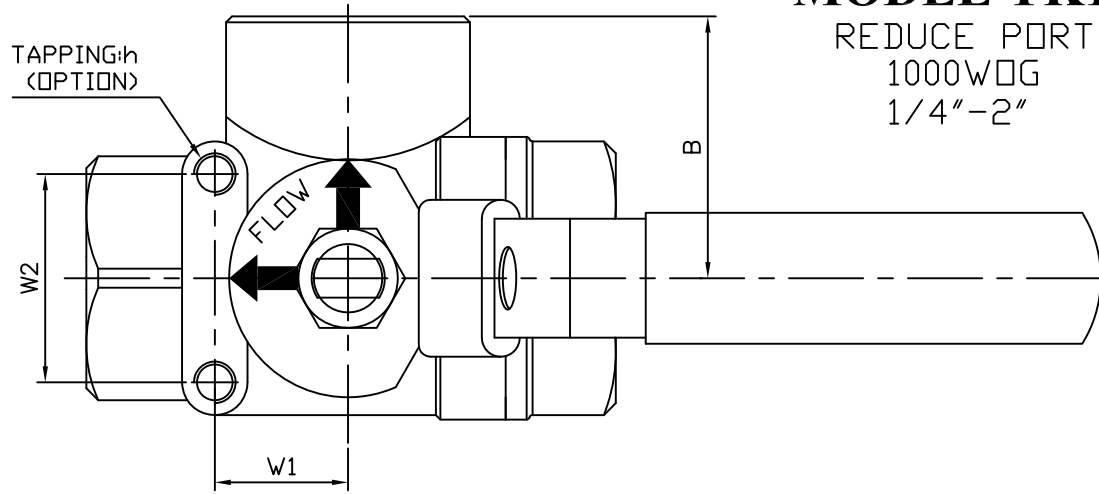


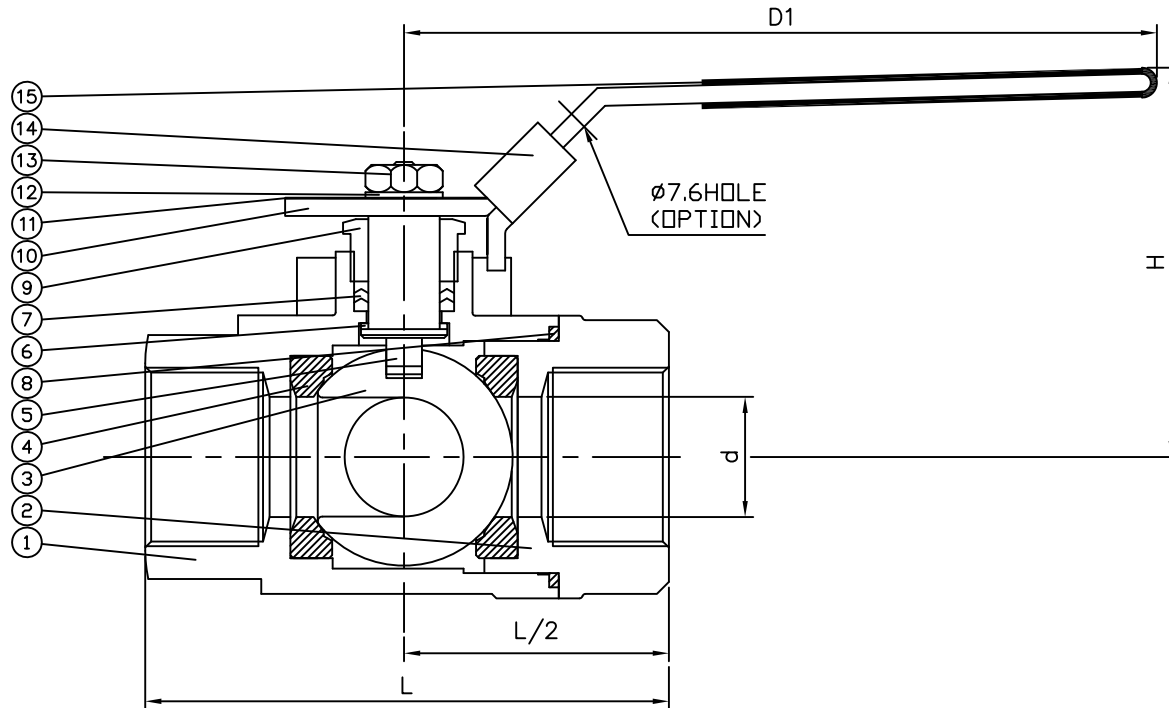
MODEL YK14

REDUCE PORT
1000WOG
1/4"-2"

MATERIALS



NO.	PART NAME	SPECIFICATION
1	BODY	ASTM A351 GR.CF8M
2	END CAPS	ASTM A351 GR.CF8M
3	BALL	ASTM A351 GR.CF8M
4	BALL SEATS	REINFORCED PTFE
5	STEM	S.S.316
6	THRUST WASHER	PTFE
7	STEM PACKINGS	PTFE
8	END SEAL	PTFE
9	GLAND	S.S.304
10	HANDLE	S.S.304
11	FLOW INDICATOR PLATE	ALUMINUM
12	HANDLE WASHER	S.S.304
13	HANDLE NUT	S.S.304
14	LOCKING PLATE	S.S.304
15	HANDLE SLEEVE	VINYL GRIP



DIMENSIONS

UNITS: Inch

NO.	d	L	H	D1	B	W1	W2	h
1/4"	0.31	2.52	2.09	3.82	1.26	0.88	1.38	10-24UNC
3/8"	0.39	2.52	2.09	3.82	1.26	0.88	1.38	10-24UNC
1/2"	0.50	2.52	2.09	3.82	1.26	0.88	1.38	10-24UNC
3/4"	0.63	2.99	2.48	4.96	1.50	0.88	1.38	10-24UNC
1"	0.79	3.43	2.60	4.96	1.71	0.88	1.38	10-24UNC
1-1/4"	0.98	3.78	3.19	5.71	1.89	0.88	1.38	10-24UNC
1-1/2"	1.26	4.49	3.27	5.71	2.24	1.00	1.50	1/4-20UNC
2"	1.50	5.59	3.78	8.03	2.80	1.00	1.50	1/4-20UNC

3WAY L-PORT THREADED END 1000WOG BALL VALVE										DATE	6/7/04	
DIM.	0.5	3	6	30	120	315	MATERIAL		CF8M	DRAWN	Y.S.W.	
	3	6	30	120	315	1000	TREATMENT		CHECK		G.K.L.	
CLASS 1	0.05	0.05	0.1	0.15	0.2	0.3	WEIGHT(Kg)		APPROVED			
CLASS 2	0.1	0.1	0.2	0.3	0.5	0.8	SCALE					
CLASS 3	0.15	0.2	0.5	0.8	1.2	2	DRAWING NO.	YK14	J & M INTERNATIONAL LTD.			
NO	DATE	DESCRIPTION					CONFIRM					