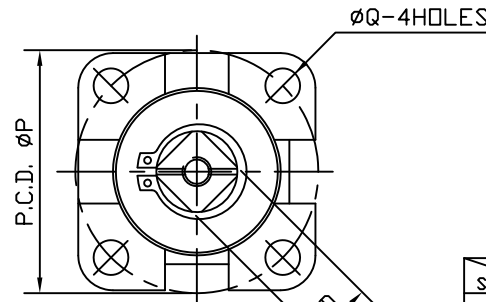


MODEL YK30

FULL PORT
1000WOG
1/4"-3"

MATERIALS LIST

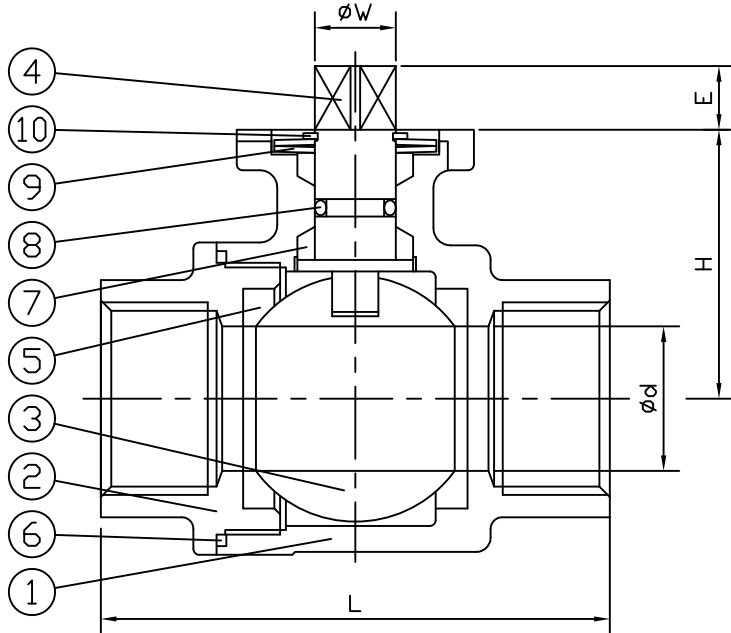
NO.	PART NAME	SPECIFICATION
1	BODY	ASTM A351 GR.CF8M
2	END CAP	ASTM A351 GR.CF8M
3	BALL	ASTM A351 GR.CF8M
4	STEM	S.S.316
5	SEATS	PTFE
6	GASKET	PTFE
7	STEM PACKING	PTFE+15%G.F.
8	O-RING	VITON
9	DISC SPRING	SUS304CSP
10	RETAINING RING	S.S.304



ISO 5211
MOUNTING PAD

DIMENSIONS

TYPE SIZE	Ød	L	H	D	E	W	UNIT:inch	
							ISO5211	
							P	ØQ
1/4	0.44	2.95	1.54	0.35	0.31	0.47	F03/F04	0.24
							1.42/1.65	0.24
3/8	0.50	2.95	1.54	0.35	0.31	0.47	F03/F04	0.24
							1.42/1.65	0.24
1/2	0.63	2.95	1.54	0.35	0.31	0.47	F03/F04	0.24
							1.42/1.65	0.24
3/4	0.79	3.15	1.67	0.35	0.31	0.47	F03/F04	0.24
							1.42/1.65	0.24
1	0.98	3.54	1.87	0.43	0.43	0.55	F04/F05	0.28
							1.65/1.97	0.24/0.28
1-1/4	1.26	4.33	2.09	0.43	0.43	0.55	F04/F05	0.28
							1.65/1.97	0.24/0.28
1-1/2	1.50	4.72	2.42	0.55	0.55	0.71	F05	0.28
							1.97	0.28
2	2.00	5.51	2.76	0.55	0.55	0.71	F05	0.28
							1.97	0.28
2-1/2	2.50	6.81	3.82	0.67	0.73	0.87	F07	0.35
							2.76	0.35
3	3.00	7.36	4.17	0.67	0.73	0.87	F07	0.35
							2.76	0.35



2PC BALL VALVE 1000WOG WITH DIRECT ISO5211 MOUNTING PAD										DATE	2015/8/18
DIM.	0.5	3	6	30	120	315	MATERIAL	CF8M		DRAWN	
	1/3	1/6	1/30	1/120	1/315	1/1000					
CLASS 1	0.05	0.05	0.1	0.15	0.2	0.3	WEIGHT(Kg)	APPROVED			
CLASS 2	0.1	0.1	0.2	0.3	0.5	0.8	SCALE				
CLASS 3	0.15	0.2	0.5	0.8	1.2	2	DRAWING NO.	YK-30	J & M INTERNATIONAL LTD.		

NO	DATE	DESCRIPTION	CONFIRM
4			
3			
2			
1			