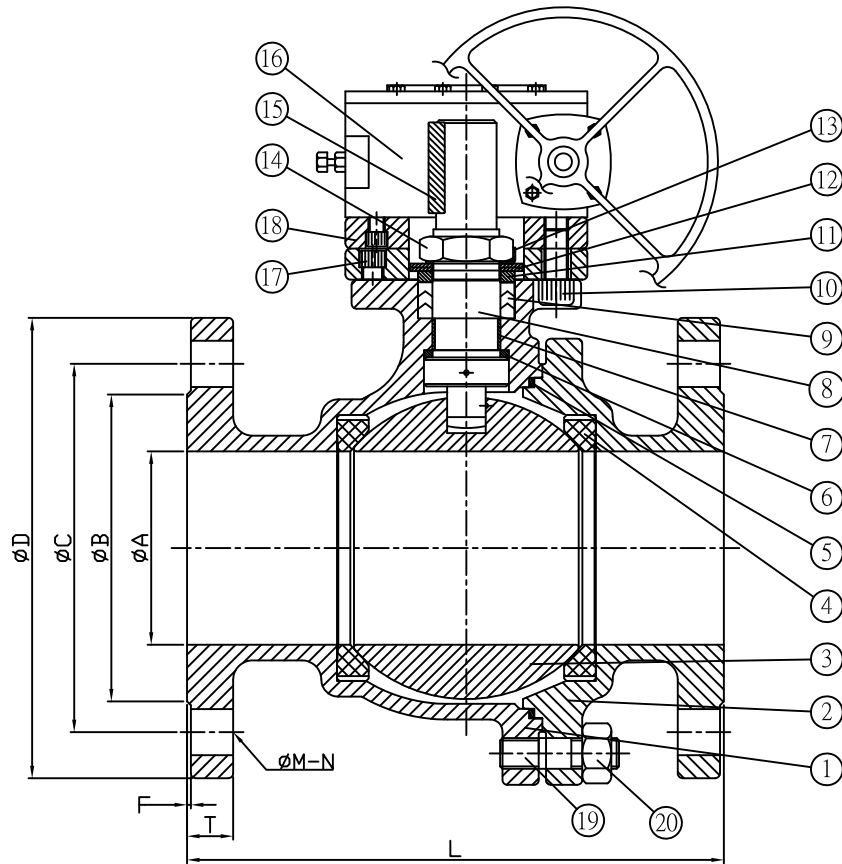


MODEL YK32

FULL PORT
#150 & #300
10"



MATERIALS

NO.	PART NAME	MATERIAL
1	BODY	A351 CF8M/A216 WCB
2	CAP	A351 CF8M/A216 WCB
3	BALL	ASTM A351 CF8M
4	SEAT	PTFE+15% G.F
5	GASKET	PTFE.
6	THRUST WASHER	PTFE.
7	STEM BUSHING	PTFE.
8	STEM	S.S.316
9	STEM PACKING	PTFE
10	BRACKET BOLT	S.S.304
11	GLAND	S.S.304
12	BELLEVILLE WASHER	S.S.304
13	LOCK WASHER	S.S.304
14	STEM NUT	S.S.304
15	STEM KEY	S.S.304
16	GEAR BOX	CAST IRON
17	GEAR BRACKET BOLT	S.S.304
18	GEAR BRACKET	S.S.304
19	BOLT	S.S.304
20	NUT	S.S.304

DIMENSIONS

Unit:Inch

SIZE	A	B	C	D	F	L	T	$\phi M-N$
150LB	9.84	12.75	14.25	16.00	0.060	20.98	1.19	$\phi 1.00-12$
300LB	9.84	12.75	15.25	17.50	0.060	22.36	1.88	$\phi 1.12-16$

2PC FLANGE BALL VALVE ANSI #150 & #300LB 10"

DATE 2015/08/31

NO	DATE	DESCRIPTION	CONFIRM	DIM.								MATERIAL		DRAWN	
				0.5	3	6	30	120	315	1000	TREATMENT		CHECK		
				3	6	30	120	315	1000	WEIGHT(Kg)		APPROVED			
				CLASS 1	0.05	0.05	0.1	0.15	0.2	0.3	SCALE		J & M INTERNATIONAL LTD.		
				CLASS 2	0.1	0.1	0.2	0.3	0.5	0.8	DRAWING NO.				YK32-250A
				CLASS 3	0.15	0.2	0.5	0.8	1.2	2					