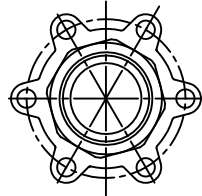
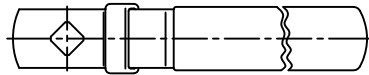
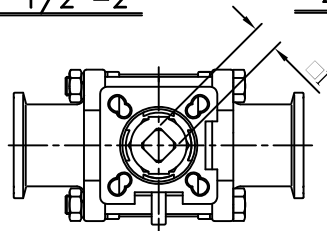




\* 1/2"-2"



\* 2 1/2"-4"

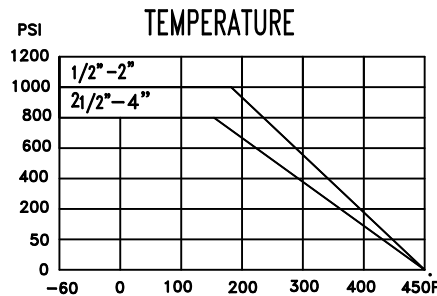


# SERIES YK5310SV

3PC SANITARY BALL VALVE  
ISO 5211 DIRECT MOUNT PAD  
STANDARD BORE

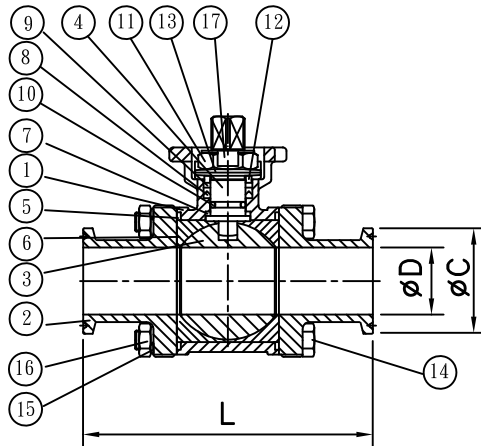
1/2"-2" PN64/1000WOG

2 1/2"-4" PN50/800WOG

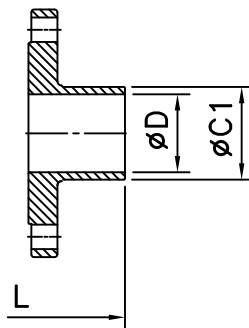


## MATERIALS LIST

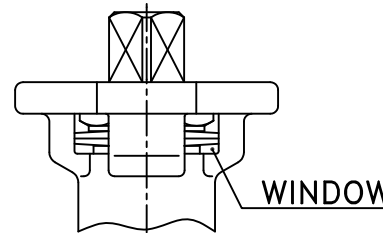
NO.	PART NAME	Q'TY	MATERIAL
1	BODY	1	ASTM-CF8M-A351
2	END CAP	2	ASTM-CF8M-A351
3	BALL	1	ASTM-CF8M-A351
4	STEM	1	SS 316
5	BODY SEAT	2	PTFE
6	SEAT/CAVITY FILLER	2	PTFE
7	STEM SEAL	1	PTFE
8	V-RING PACKING	1SET	PTFE
9	BUSHING	1	50%S.S.POWDER filled PTFE
10	O-RING	1	VITON
11	STEM NUT	1	SS 304
12	GLAND	1	SS 304
13	BELLEVILLE WASHER	2	SS 301
14	BOLT	*	SS 304
15	WASHER	*	SS 304
16	BOLT NUT	*	SS 304



MODEL YK5310SVC  
CLAMP END



MODEL YK5310SVB  
BUTT WELD END



## DIMENSIONS(INCH)

SIZE	φ C	φ C1	φ D	□ I	L	ISO5211
1/2"	0.98	0.5	0.37	0.35	3.5	F03 F04
3/4"	0.98	0.75	0.63	0.35	3.98	F03 F04
1"	1.98	1.0	0.87	0.43	4.49	F04 F05
1 1/2"	1.98	1.5	1.38	0.55	5.51	F05 F07
2"	2.54	2.0	1.87	0.55	6.14	F05 F07
2 1/2"	3.05	2.5	2.37	0.67	7.76	F07 F10
3"	3.58	3.0	2.87	0.67	9.02	F07 F10
4"	4.68	4.0	3.83	0.87	9.49	F10

REVISION	DATE	DESCRIPTION	DRAWN BY	DESIGNED BY	SCALE	J&M INTERNATIONAL LTD	SERIES YK5310SV	DRAWING NO.
△	99-05-13	螺栓方向修改	PETER	PETER				9067
			CHECKED BY	APPROVAL BY	DATE			
					96-08-23			