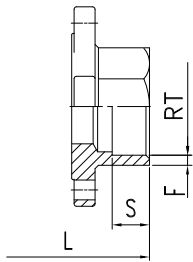
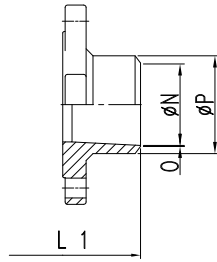


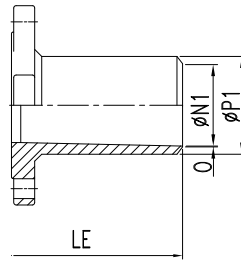
MODEL YK532
Threaded
End



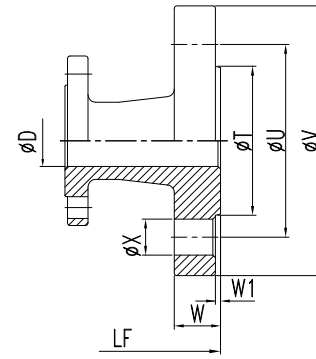
MODEL YK532S
Socket Weld
End



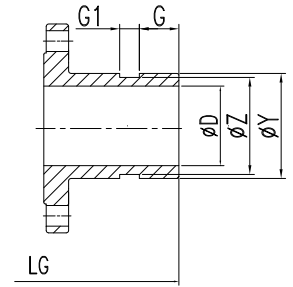
MODEL YK532B
Butt Weld
End



MODEL YK532LB
Extended Butt
Weld End



MODEL YK532F
Flange End
(PN 25/40 F1)



MODEL YK532LBG
Extended Butt
Weld Grooved
End

DIMENSIONS(INCH)



SIZE	A	B	ϕD	E	F	G	G1	H	$\square I$	L	L1	LE	LF	LG	ϕN	$\phi N1$	ϕM	O	ϕP	$\phi P1$	RT	S	ϕT	ϕU	ϕV	W	W1	ϕX	ϕY	ϕZ	ISO5211
1/2"	1.42	0.35	0.59	5	0.08	0.63	0.31	2.48	0.35	2.72	2.72	8.86	5.16	5	0.71	0.61	0.24	0.04	0.89	21	0.86	0.47	1.77	2.56	3.74	0.63	0.08	0.55	0.81	0.7	F03
3/4"	1.54	0.35	0.79	5	0.1	0.63	0.31	2.6	0.35	3.07	3.07	8.86	5.91	5	0.92	0.81	0.24	0.04	1.08	26.8	1.07	0.55	2.28	2.95	4.13	0.71	0.08	0.55	1.05	0.94	F03
1"	1.81	0.43	0.98	5.83	0.13	0.63	0.31	3.07	0.43	3.31	3.31	9.65	6.3	6	1.02	1.02	0.24	0.04	1.32	34.4	1.33	0.55	2.68	3.35	4.53	0.71	0.08	0.55	1.31	1.19	F04
1 1/4"	2.03	0.43	1.26	5.83	0.16	0.63	0.31	3.29	0.43	4.09	4.09	10.04	7.17	6	1.38	1.31	0.24	0.04	1.65	43.4	1.68	0.59	3.07	3.94	5.51	0.71	0.08	0.71	1.66	1.54	F04
1 1/2"	2.34	0.53	1.5	8.11	0.15	0.63	0.31	3.6	0.55	4.69	4.69	10.24	7.87	7	1.63	1.59	0.28	0.04	1.91	49.8	1.92	0.67	3.46	4.33	5.91	0.71	0.12	0.71	1.9	1.78	F05
2"	2.67	0.53	1.97	8.11	0.17	0.63	0.31	3.93	0.55	5.16	5.16	10.83	9.06	8	2.15	2.05	0.28	0.04	2.38	61	2.41	0.75	4.02	4.92	6.5	0.79	0.12	0.71	2.37	2.25	F05
2 1/2"	3.66	0.67	2.56	11.2	0.28	0.63	0.31	5.51	0.67	7.28	7.48	13.15	11.4	9	2.75	2.56	0.35	0.04	3.03	77	2.91	0.83	4.8	5.71	7.28	0.87	0.12	0.71	2.87	2.72	F07
3"	4.02	0.67	3.15	11.2	0.3	0.63	0.31	5.87	0.67	8.07	8.66	13.94	12.2	10	3.23	3.19	0.35	0.04	3.54	91	3.54	0.98	5.43	6.3	7.87	0.94	0.12	0.71	3.5	3.34	F07
4"	4.8	0.87	3.94	12.2	0.31	0.63	0.38	6.77	0.87	9.06	10.63	14.17	13.8	12	4.13	3.98	0.47	0.04	4.53	115	4.55	1.18	6.38	7.48	9.25	0.94	0.12	0.91	4.49	3.83	F10

REVISION	DATE	DESCRIPTION	DRAWN BY	DESIGNED BY	SCALE	J&M INTERNATIONAL LTD	SERIES YK532	DRAWING NO.
\triangle	98-02-11	4" 長度修改	PETER	PETER				
			CHECKED BY	APPROVAL BY	DATE			
					90-06-15			