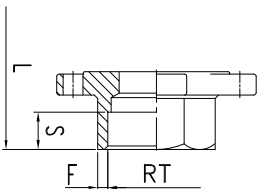
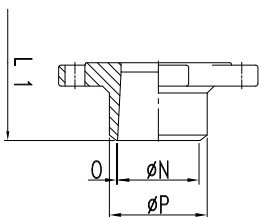


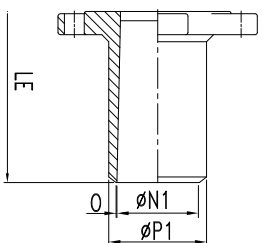
MODEL YK532
Threaded
End



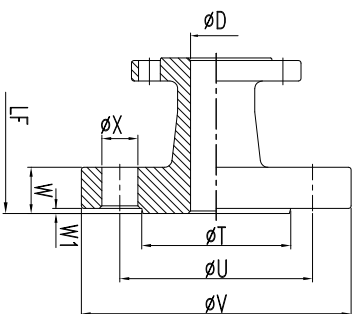
MODEL YK532S
Socket Weld
End



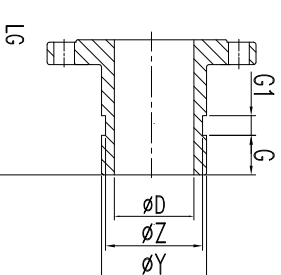
MODEL YK532B
Butt Weld
End



MODEL YK532LB
Extended Butt
Weld End



MODEL YK532F
Flange End
(PN 25/40 F1)



MODEL YK532LBG
Extended Butt
Weld Grooved
End

DIMENSIONS(INCH)



SIZE	A	B	ØD	E	F	G	G1	H	□	L	L1	LE	LF	LG	ØN	ØN1	ØM	O	ØP	ØP1	RT	S	ØT	ØU	ØV	W	W1	ØX	ØY	ØZ	IS05211
1/2"	1.42	0.35	0.59	5	0.08	0.63	0.31	2.48	0.35	2.72	2.72	8.86	5.16	5	0.71	0.61	0.24	0.04	0.89	21	0.86	0.47	1.77	2.56	3.74	0.63	0.08	0.55	0.81	0.7	F03
3/4"	1.54	0.35	0.79	5	0.1	0.63	0.31	2.6	0.35	3.07	3.07	8.86	5.91	5	0.92	0.81	0.24	0.04	1.08	26.8	1.07	0.55	2.28	2.95	4.13	0.71	0.08	0.55	1.05	0.94	F03
1"	1.81	0.43	0.98	5.83	0.13	0.63	0.31	3.07	0.43	3.31	3.31	9.65	6.3	6	1.02	1.02	0.24	0.04	1.32	34.4	1.33	0.55	2.68	3.35	4.53	0.71	0.08	0.55	1.31	1.19	F04
1 1/4"	2.03	0.43	1.26	5.83	0.16	0.63	0.31	3.29	0.43	4.09	4.09	10.04	7.17	6	1.38	1.31	0.24	0.04	1.65	43.4	1.68	0.59	3.07	3.94	5.51	0.71	0.08	0.71	1.66	1.54	F04
1 1/2"	2.34	0.53	1.5	8.11	0.15	0.63	0.31	3.6	0.55	4.69	4.69	10.24	7.87	7	1.63	1.59	0.28	0.04	1.91	49.8	1.92	0.67	3.46	4.33	5.91	0.71	0.12	0.71	1.9	1.78	F05
2"	2.67	0.53	1.97	8.11	0.17	0.63	0.31	3.93	0.55	5.16	5.16	10.83	9.06	8	2.15	2.05	0.28	0.04	2.38	61	2.41	0.75	4.02	4.92	6.5	0.79	0.12	0.71	2.37	2.25	F05
2 1/2"	3.66	0.67	2.56	11.2	0.28	0.63	0.31	5.51	0.67	7.28	7.48	13.15	11.4	9	2.75	2.56	0.35	0.04	3.03	77	2.91	0.83	4.8	5.71	7.28	0.87	0.12	0.71	2.87	2.72	F07
3"	4.02	0.67	3.15	11.2	0.3	0.63	0.31	5.87	0.67	8.07	8.66	13.94	12.2	10	3.23	3.19	0.35	0.04	3.54	91	3.54	0.98	5.43	6.3	7.87	0.94	0.12	0.71	3.5	3.34	F07
4"	4.8	0.87	3.94	12.2	0.31	0.63	0.38	6.77	0.87	9.06	10.63	14.17	13.8	12	4.13	3.98	0.47	0.04	4.53	115	4.55	1.18	6.38	7.48	9.25	0.94	0.12	0.91	4.49	3.83	F10

REVISION	DATE	DESCRIPTION	DRAWN BY	DESIGNED BY	SCALE
△	98-02-11	4" 長度修改	PETER	PETER	
			CHECKED BY	APPROVAL BY	DATE
					90-06-15

J&M INTERNATIONAL LTD

SERIES YK532

DRAWING NO.

8015-2/2